

AOLGA INDUSTRY LIMITED

PRODUCT CATALOG

PROFESSIONAL HOTEL
ELECTRICAL APPLIANCES BRAND

ECOLUX

aolga

Authorised agents & distributors



SERIAL INVESTMENT
LANKA (PVT) LTD



aolga

CONTENTS

- Ⓐ Company Profile
- Ⓑ Coffee Maker
- Ⓒ Hair Dryer
- Ⓓ Electric Kettle
- Ⓔ Kettle Tray
- Ⓕ Electric Iron
- Ⓖ Iron Board
- Ⓗ Alarm Clock
- Ⓘ Weight Scale
- Ⓙ Hotel Room Safes
- Ⓚ Hand-held CEU for Safe
- Ⓛ Absorption Minibar
- Ⓜ Thermoelectric Minibar
- Ⓝ Thermoelectric Minibar(Heat Pipe)



Relying on Hong Kong and based in Shenzhen, Aolga has been adhering to the business concept of being pragmatic, efficient, stable and reliable facing the world since its establishment. With the goal of creating a world-class brand of safe and reliable high-end hotel electrical products, Aolga provides our customers with exquisite and high-quality hospitality appliances through the integration of R&D, manufacturing and sales.

B COFFEE MAKER

Quality life, Easy to enjoy



GP100 COFFEE MAKER

Specification

- Water Capacity: 0.6L
- Rated Power: 1200W
- Voltage: 220-240V~/120V~
- Rated Frequency: 50Hz/60Hz
- Length of Power Cable: 1.0M
- Color: Black/White/Wood color

Compatible capsules

- 0.6L removable BPA water tank, easy to control water requirement
- Stand by 10 minutes to enter energy-saving mode automatically
- Two cup sizes of 30ml and 50ml are preset
- Capsule storage box with large capacity: 6-7 coffee capsules can be stored
- NTC precise temperature control to ensure the extraction quality and taste of coffee
- Adjustable and detachable cup holder (leftover water box and bag box)
- Compatible capsules: Nespresso coffee capsules, Nestlé, Starbucks, ILLY, LVAZZA, LOR



TC01 COFFEE MAKER

Specification

- Water Capacity: 0.7L
- Rated Power: 1400W
- Voltage: 220-240V~/100-127V~
- Rated Frequency: 50Hz/60Hz
- Color: Black/White/Red/Silver

Compatible capsules

- 480ml waste capsule container
- 18 small nespresso capsules can be stored at one time
- Three touch buttons for ristretto, espresso(short), Lungo(long):25ml/40ml/110ml
- Customize different cup option
- Adjustable cup height
- Detachable drip tray for easy cleaning, removable water tank
- NTC temperature control
- Compatible capsules: Nespresso Compatible Capsules, Lavazza blue/ Lavazza Espresso Point/Cafitaly/ Espresso Cap/ILLY, Tutto, etc.



ST-503D-2e COFFEE MAKER

Specification

- Water Capacity: 0.8L
- Rated Power: 1260W
- Voltage: 220-240V~/120V~
- Rated Frequency: 50Hz/60Hz
- Color: Black/Red/Blue

Compatible capsules

- Capsule bin with max accommodation of 10 used capsules ;
- Transparent removable water tank;
- NTC temperature control;
- 19 bar Italy Pump;
- On/Off switch with illumination;
- Capsule auto ejection system;
- Adjustable dispenser for various cups;
- Manually or auto stop;
- Patented brewing group & design
- Compatible capsules: Nespresso Compatible Capsules, Nestlé, Starbucks, ILLY, LVAZZA, LOR



AC-514K COFFEE MAKER

Specification

- Water Capacity: 0.6L
- Rated Power: 1250W/1450W
- Voltage: 220-240V~/110V~
- Rated Frequency: 50Hz/60Hz
- Color: Black/Black and red
- 19 bar pump
- Manually or automatically stop
- Stand by for 15 mins
- Short Espresso/Long Nespresso with LED in white



Small Nespresso capsule brewing cup



Large Dolce Gusto capsule brewing cup



800ML water tank



Overheating protection



Simple function buttons



Make a cup of coffee in 40 seconds



Removable design anti-corrosion

Compatible capsules

- Nespresso Compatible Capsules
- Dolce Gusto Capsules
- Coffee powder
- Coffee pod
- Lavazza A Modo Mio
- Lavazza Blue
- Caffitaly



Small Nespresso capsule brewing cup



Large Dolce Gusto capsule brewing cup



Espresso coffee powder brewing cup



AC-513K COFFEE MAKER

Specification

- Water Capacity: 0.8L
- Color: Black and silver
- Rated Power: 1250W/1450W
- Voltage: 220-240V~/120V~
- Rated Frequency: 50Hz/60Hz
- 19 bar pump
- Manually or automatically stop
- Stand by for 15 mins
- Short Espresso/Long Nespresso with LED in white



Small Nespresso capsule brewing cup



Large Dolce Gusto capsule brewing cup



800ML water tank



Overheating protection



Simple function buttons



Make a cup of coffee in 40 seconds



Removable design anti-corrosion

Compatible capsules

- Nespresso Compatible Capsules
- Dolce Gusto Capsules
- Coffee powder
- Coffee pod
- Lavazza A Modo Mio
- Lavazza Blue
- Caffitaly



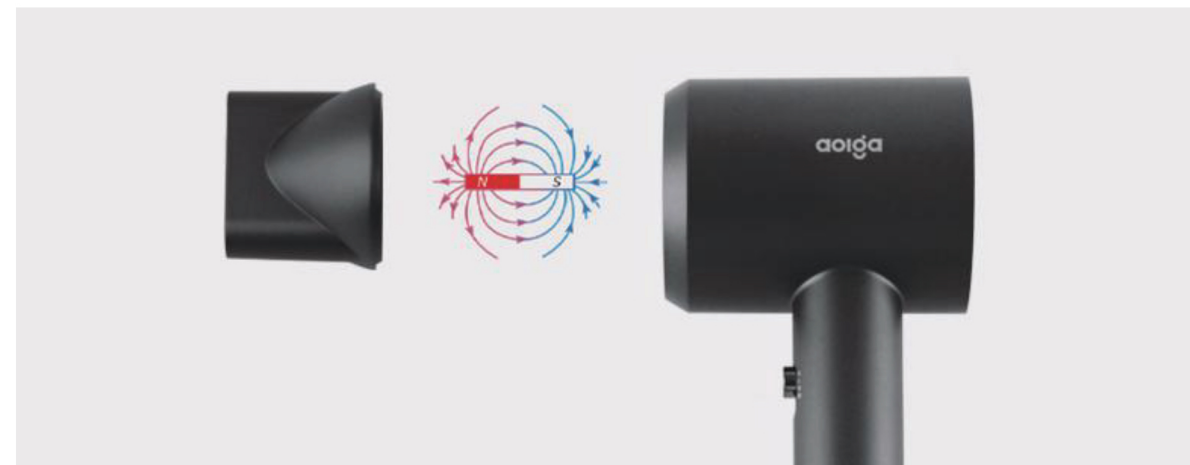
Small Nespresso capsule brewing cup



Large Dolce Gusto capsule brewing cup



Espresso coffee powder brewing cup



RM-DF11 HAIR DRYER

Specification

- Color: Gray/White
- Rated Power: 1400-1600W/1200-1400W
- Voltage: 220-240V~/125V~
- Rated Frequency: 50Hz/60Hz
- Length of Power Cable: 1.8M



Features

- Motor: DC Motor
- Airflow Speed: $\geq 11\text{m/s}$
- Blast Capacity: $\geq 12\text{L/s}$
- Motor Speed: $22000\text{r/min} \pm 1500$
- Anion hair care
- Hair Dryer with de-noising magnetic ironing tuyere apparatus
- Overheating protection
- 2 wind speed options, 3 temperature controlled options



Optional: gift bag or gift box for hair dryer



RM-DF15 HAIR DRYER

Specification

- Color: Gray/White
- Rated Power: 1800-2000W/1600-1875W
- Voltage: 220-240V~/125V~
- Rated Frequency: 50Hz/60Hz
- Length of Power Cable: 1.8M

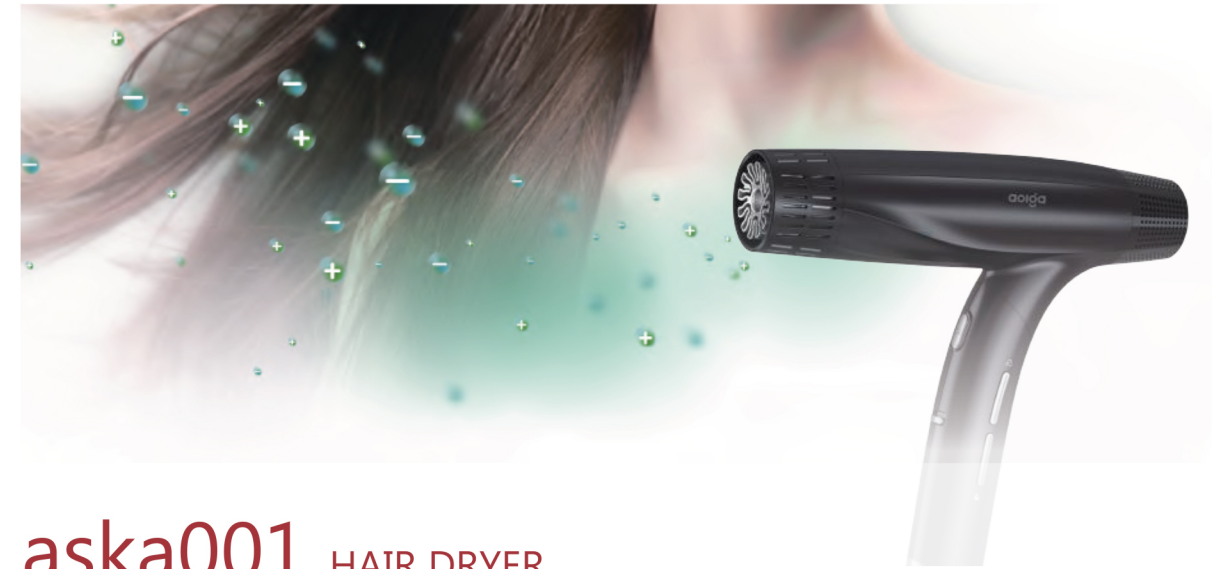


Features

- Airflow Speed: $\geq 11\text{m/s}$
- Blast Capacity: $\geq 12\text{L/s}$
- Motor Speed: $22000\text{r/min} \pm 1500$
- Noise: $\leq 85\text{dB}$
- Injection molded case
- Overheating protection
- 2 wind speed options, 3 temperature controlled options



Optional: gift bag or gift box for hair dryer



aska001 HAIR DRYER

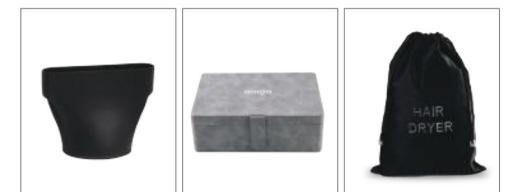
Specification

- Color: Black/Red/Blue
- Rated Power: 1500W/1400W
- Voltage: 220-240V~/120V~
- Rated Frequency: 50Hz/60Hz
- Length of Power Cable: 1.9M



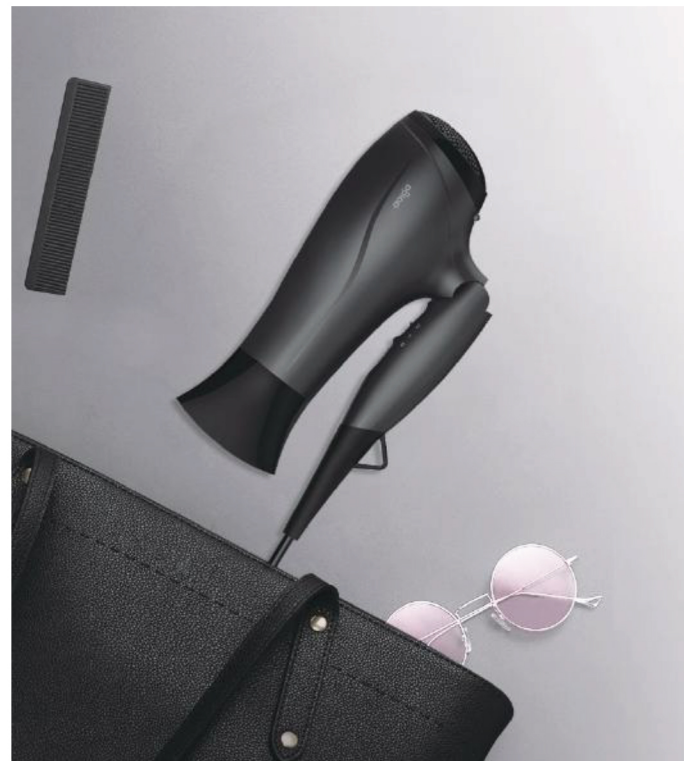
Features

- Foldable handle
- High torque and high speed
- Auto adjusted temperature by temperature controlling technology
- Double-layer structure and low surface temperature for thermal insulation effectively
- 110,000r/min motor speed
- 3 wind speed options
- 3 temperature controlled options
- Auto cleaning up by reverse cold wind blowing
- Anion care
- Overheating protection for 30mins



Detachable Tuyere

Optional: gift bag or gift box for hair dryer



HD-8010 FOLDABLE ANION HAIR DRYER

Specification

- Color: White/Gray/
- Rated Power: 1800-2200W/1400W
- Voltage: 220-240V~/120V~
- Rated Frequency: 50Hz/60Hz
- Length of Power Cable: 1.8M

Features

- Foldable handle optimizes storage space
- 2000W strong wind and high-speed rotation bring fast drying
- High concentration of negative ions reduce static electricity effectively and make hair soft and smooth
- Intelligent temperature control protection can automatically power off when overheated while rework automatically when cooling
- Two gears and one-key to get cold air
- Shape hair with nozzle at will



Optional: gift bag or gift box for hair dryer



D158 WALL-MOUNTED HAIR DRYER

Specification

- Color: Black/White
- Rated Power: 1800W/1600W
- Voltage: 220-240V~/110V~
- Rated Frequency: 50Hz/60Hz

Features

- Famous brand DC motor with high torque and high speed
- Overheating protection
- 2 wind speed options and 2/3temperature controlled options
- Micro switch

RCY-67588B WALL-MOUNTED HAIR DRYER

Specification

- Color: Black/White
- Rated Power: 1800W/1600W
- Voltage: 220-240V~/100-127V~
- Rated Frequency: 50Hz/60Hz

Features

- Famous brand DC motor with high torque and high speed
- Overheating protection
- 2 wind speed options and 2/3temperature controlled options
- Micro switch

D ELECTRIC KETTLE

Quiet kettle, Brilliant life



EKS06229B ELECTRIC KETTLE

Specification

- Color: White/Black
- Capacity: 0.6L
- Rated Power: 1000W
- Voltage: 220-240V~/120V~
- Rated Frequency: 50Hz/60Hz

Features

- Fashionable appearance and color
- Separate but stable base, which will not make it shake when boiling water
- Food grade SUS304 stainless steel and spray paint craftsmanship
- Auto power off, boil-dry protection

LL-8860 DOUBLE LAYER ELECTRIC KETTLE

Specification

- Color: White/Black
- Capacity: 0.8L
- Rated Power: 1000W
- Voltage: 220-240V~/120V~
- Rated Frequency: 50Hz/60Hz
- Diameter: 136.7MM

Features

- Double-layer pot body
- SUS304 inner pot and stainless steel cover
- Outer housing: PP
- High quality temperature controller
- Dry burning protection
- Automatic switch, one body forming



PY0801 ELECTRIC KETTLE

Specification

- Color: Champagne Gold
- Capacity: 0.8L
- Rated Power: 1000-1360W
- Voltage: 220-240V~/127V~
- Rated Frequency: 50Hz/60Hz

Features

- SUS304 stainless steel
- Multi-function kettle
- 360° rotation cordless
- Concealed heating element
- Safety locking lid
- External water level indicator
- With filter
- Automatic/manual switch off
- Boil-dry protection





LL-8865 DOUBLE LAYER ELECTRIC KETTLE

Specification

- Color: Black/Stainless steel color
- Capacity: 1.0L
- Rated Power: 1000W
- Voltage: 220-240V~/110V~
- Rated Frequency: 50Hz/60Hz
- Diameter: 137MM

Features

- Double-layer pot body
- SUS304 inner pot and stainless steel cover
- Outer housing: Colored steel
- High quality temperature controller
- Dry burning protection
- Automatic switch, one body forming



LL-8516 ELECTRIC KETTLE

Specification

- Color: Silver
- Capacity: 1.0L
- Rated Power: 1000W
- Voltage: 220-240V~/110V~
- Rated Frequency: 50Hz/60Hz

Features

- SUS304 inner pot and stainless steel cover
- High quality temperature controller
- Automatic power-off
- Anti-dry burning double protection
- Visible one-button heating at night, equipped with a visible heating indicator
- Open the lid with one button on the handle

EKS10108 ELECTRIC KETTLE

Specification

- Color: Stainless steel color
- Capacity: 1.0L/1.2L
- Rated Power: 1850-2200W/1500W
- Voltage: 220-240V~/120V~
- Rated Frequency: 50Hz/60Hz

Features

- SUS304 stainless steel multi-function kettle
- High-quality UK STRIX temperature controller is optional
- 360° rotation cordless
- Concealed heating element
- Safety locking lid
- External water level indicator
- Automatic/manual switch off
- Boil-dry protection
- Be with water level windows



GL-B04E5B ELECTRIC KETTLE

Specification

- Color: Silver grey/White
- Capacity: 1.2L
- Rated Power: 1350-1600W/1000W
- Voltage: 220-240V~/110V~
- Rated Frequency: 50Hz/60Hz
- Diameter: 155MM

Features

- Inner Pot: 0.5MM thickened SUS304 stainless steel
- Thermostat: UK STRIX
- Special instant LED temperature display
- Anti-dumping, stable triangle structure
- Triangular spout to control water flow



E KETTLE TRAY

Comfortable and quality life



AKT-K KETTLE TRAY

Specification

- Color: Black/Gray
- Product Size(WxDxH): 458x228x38MM



Features

- Double ABS material, SUS304 on four sides
- For kettle: LL-8860/LL-8865

AKT-L KETTLE TRAY

Specification

- Color: Black
- Product Size(WxDxH): 388x188x38MM



Features

- Double ABS material, SUS304 on four sides
- For kettle: LL-8860/LL-8865



GT001 HANDHELD IRON

Features

- Color: White
- Dry & wet ironing
- Water Tank Capacity: 150ML
- Rated Power: 1100-1300W/1200W
- Voltage: 220-240V~/120V~
- Rated Frequency: 50Hz/60Hz
- Ceramic soleplate
- 30 seconds to warm up quickly
- Foldable handle for easy storage
- Variable usages for both flat and hanging ironing
- Unique secondary heating technology
- Automatically power off when no operation for 10mins
- Automatic cleaning



SW-605 ELECTRIC IRON

Specification

- Color: Black/Light gray and white
- Material: ABS+PC
- Water Tank Capacity: 320ML
- Rated Power: 2000W/1200W
- Voltage: 220-240V~/120V~
- Rated Frequency: 50Hz/60Hz

Features

- Dry/Spray/Steam Function
- Ceramic soleplate
- Self-cleaning
- Powerful burst steam&vertical steam
- Adjustable thermostat control
- Variable steam control
- Overheating safety protection
- Indicate light
- Automatically shut off



1338 IRON BOARD

Features

- Color: Black
- Product size: W30.5xL123CM
- Various height adjustment up to 78CM
- Mesh ironing top W12xL36 inch [30.5x91.5CM]
- Strong structure legs design
- Stylish iron rest
- Flameproof fabric plus 10MM thickened cotton cushion



TCL-D IRON HOLDER

Features

- Color: White/Black
- Suitable for different size iron
- ABS moulded, with two silicone strips resistant to high temperature
- Product Size: L330xW140xH110MM
- Net Weight: 0.61KG
- Gross Weight: 0.67KG
- Package Standard: 20PCS/CTN
- Master Carton Size: W845xD343xH306MM

H ALARM CLOCK

Comfortable and quality life



H7 ALARM CLOCK

Features

- Color: Black/White
- AC Input: 100-240V~ 50/60Hz
- DC Output: 9V/2A transformer
- Product Size(LxWxH): L150xW90xH75MM
- Bluetooth version 5.0
- Wireless Qi mobile phone charging or charging with the front USB+Type C
- Loudspeaker
- Multi-function with Bluetooth, alarm clock, radio, showing week, TF, disk, AUX, Q1 wireless
- Charging and playing music features
- LED digital display
- FM digital stereo
- Mute function
- Two groups of alarm clock functions
- Alarm clock for working days setting
- NAP and snooze function

K5 ALARM CLOCK

Features

- Color: Black/White
- AC Input: 100-240V~, 50/60Hz
- DC Output: 5V/2A
- Product Size(LxWxH): L127xW50xH78MM
- Bluetooth version 5.0
- Loudspeaker
- Multi-function with Bluetooth, alarm clock, radio, showing time, week, temperature and mobile phone charging
- Two USB in the front and one Type C interface for devices charging
- 4 inch AV LCD digital display
- Memory function, no need to reset after turning on
- Mute function
- Two groups of alarm clock functions; alarm clock for working days setting
- NAP and snooze function

I WEIGHT SCALE

Healthy life, Easy to enjoy

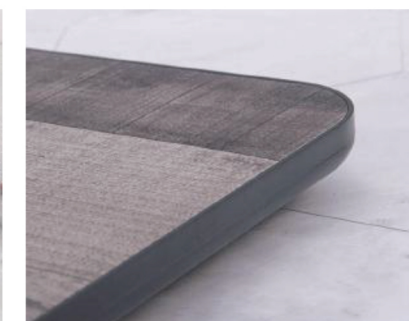


CW300

SPONTANEOUS ELECTRIC WEIGHT SCALE

Features

- Color: White/Gray
- Product Size: L302xW302xH25MM
- Weighing Range: 3KG-180KG
- Self-generating system without battery
- ABS+ architectural grade tempered glass
- High-precision four-corner sensor which is accurate to 0.1KG
- Comfortable large scale surface, high-definition LCD display
- Auto power off / power on on the scale / overload prompt / auto zero
- Humanized design, large rounded corners



CW276 FIREPROOF SCALE

Features

- Material: ABS+fireproof material
- Product Size: L276xW276xH16.2MM
- Weighing Range: 3KG-150KG
- High precision sensor system with precision being 0.05kg
- Integral body to open and close without screw exposed for being durable and long service life
- 16.2mm thin scale body with lower center of gravity and being more stable when weighing
- Clear LCD digital display with soft white backlight, making it still clear under the low light and dark environment
- Auto power off/on
- Overload/Low battery prompt



CW269 GLASS SCALE

Features

- Color: Black/White
- Product Size: L300xW300xH24MM
- Weighing Range: 5KG-180KG
- Full ABS covered base
- ABS+tempered glass
- Invisible LED display
- 4 high sensitive sensor
- Intelligent automatic switch ON/OFF
- Integrated weighing surface
- Light weight, compact and simple
- Four-point force
- Humanized appearance design



HOTEL ROOM SAFES

Quality life, Easy to enjoy



K-JG003



K-BE003



K-FG003



ELECTRONIC PASSWORD SAFES

Features

- Color: Black/Gray
- Size(WxDxH): 420x380x200MM(K-JG003) / 480x395x230MM(K-BE003) / 400x350x145MM(K-FG003)
- An electronic code lock system is adopted with programmable CPU
- LED digital display, and there will be prompt voice when operate
- External backup power interface
- 13-15 inch laptops can be stored well
- Three-level management setting system: administrator password (can be disabled), mechanical lock device (can be disabled) and HHU electronic decoder
- Open the safe forcibly if needed and check and print more than 200 records of safes' opening and closing recently



Model	K-JG001	K-JG002	K-JG800
Display	LED	LEDKG	LED
Size (WxDxH)	420x380x200MM	420x380x200MM	420x380x200MM
N.W/G.W	12.6/13.6KG	12.6/13.6KG	13.4/14KG
Color	Gray/Black	Gray/Black	Gray/Black



Model	K-BE100	K-BE200	K-BE800
Display	LCD	LED	LED
Size (WxDxH)	420x380x200MM	420x380x200MM	420x380x200MM
N.W/G.W	11.2/12.2KG	11.2/13KG	12.1/13.2KG
Color	Gray/Black	Gray/Black	Gray/Black



Model	K-BE200H	K-DR200
Display	LED	LED
Size (WxDxH)	400x360x500MM	480x395x230MM
N.W/G.W	22.5/24.7KG	22/23KG
Color	Gray/Black	Gray/Black



Model	K-FG001	K-FG005A
Display	LED	LED
Size (WxDxH)	400x350x145MM	400x350x145MM
N.W/G.W	11.5/12.3KG	11.5/12.5KG
Color	Gray/Black	Gray/Black



Model	K-FG005B	K-FG800
Display	LED	LED
Size (WxDxH)	400x350x127MM	400x350x145MM
N.W/G.W	10.5/11.5KG	11.6/12.4KG
Color	Gray/Black	Gray/Black



HAND-HELD CEU FOR SAFE

Quality life, Easy to enjoy



DT-01 HAND-HELD CEU FOR SAFE

Series

- Color: Gray
- Size (WxDxH): 152x86x34MM
- Length of Power Cable: 720M
- Emergency power supply for the safe
- Read the data of the safe
- Decode the safe when the password is lost
- Suitable for all models of AOLGA safe



DT-02 HAND-HELD CEU FOR SAFE

Series

- Color: Black
- Size (WxDxH): 130x64x28MM
- Length of Power Cable: 430MM
- Emergency power supply for the safe
- Read the data of the safe
- Decode the safe when the password is lost
- Suitable for all models of AOLGA safe





ABSORPTION MINIBAR

No compressor. No noise



M-25A



M-25T



M-25C



M-30A



M-30T



M-30C

25L ABSORPTION MINIBAR

Series

- Color: Gray/Black
- Volume: 25L
- Rated Power: 60W
- Voltage: 220-240V~/110-120V~
- Rated Frequency: 50Hz/60Hz
- Size (WxDxH): 400x385x490MM(M-25A) / 400x370x493MM(M-25T) / 400x370x493MM(M-25C)
- N.W/G.W(kg): 14/15(M-25A) / 15.5/16.5(M-25T) / 15.5/16.5(M-25C)
- Cooling Method: Absorption technologies, ammonia water circle
- Minibar are with no compressor, no fan, no moving part, no Freon, no vibration, silent and don't produce any noise, function stably and soundly
- The door hinges of the product are left-and-right interchangeable

30L ABSORPTION MINIBAR

Series

- Color: Gray/Black
- Volume: 30L
- Rated Power: 60W
- Voltage: 220-240V~/110-120V~
- Rated Frequency: 50Hz/60Hz
- Size (WxDxH): 400x420x490MM(M-30A) / 400x410x493 MM(M-30T) / 400x410x493MM(M-30C)
- N.W/G.W(kg): 14.5/15.5(M-30A) / 16.5/17.5 (M-30T) / 17 .5/18.5(M-30C)
- Intelligent automatic defrost
- Absorption cooling technique, noiseless when working
- Reversible door opening direction
- Door controlled low rated power LED light (magnet sensor)



M-40A



M-40T



M-50A

40/50L ABSORPTION MINIBAR

Series

- Color: Gray/Black
- Volume: 40L(M-40A/M-40T) / 50L(M-50A)
- Rated Power: 60W
- Voltage: 220-240V~/110-120V~
- Rated Frequency: 50Hz/60Hz
- Size (WxDxH): 400x440x550MM(M-40A) / 400x425x553MM(M-40T) / 400x440x665MM(M-50)
- N.W/G.W(kg): 17/18.5(M-40A) / 18/19.5(M-40T) / 18.2/20(M-50A)
- Internal LED lighting
- Interchangeable door hinge (left and right)
- Food-grade high-gloss antibacterial tank meets European RoHS standards to ensure food storage safety

M THERMOELECTRIC MINIBAR



M-22BA



M-22BC



Model	M-22BA	M-22BC
Volume	20L	20L
Voltage	220-240V~/110V~	220-240V~/110V~
Rated Frequency	50Hz/60Hz	50Hz/60Hz
Size (WxDxH)	360x353x400MM	360x347x440MM
N.W/G.W	7.2/8.1KG	9.5/10.4KG
Color	Black	Black



M-30BA



M-30BC

Model	M-30BA	M-30BC
Volume	30L	30L
Voltage	220-240V~/110V~	220-240V~/110V~
Rated Frequency	50Hz/60Hz	50Hz/60Hz
Size (WxDxH)	380x385x466MM	380x385x466MM
N.W/G.W	7.8/8.7KG	10.1/11.2KG
Color	Black	Black



M-40BA



M-40BC

Model	M-40BA	M-40BC
Volume	40L	40L
Voltage	220-240V~/110V~	220-240V~/110V~
Rated Frequency	50Hz/60Hz	50Hz/60Hz
Size (WxDxH)	430x410x501MM	430x410x501MM
N.W/G.W	8.9/10KG	11.8/12.8KG
Color	Black	Black



N THERMORELECTRIC MINIBAR(HEAT PIPE)



CB-21SA



CB-45SA

DRAWER MINIBAR

Series

- Color: Gray/Black
- Volume: 21L(CB-21SA) / 45L(CB-45SA)
- Rated Power: 60W
- Voltage: 220-240V~/110-120V~
- Rated Frequency: 50Hz/60Hz
- Size (WxDxH): 385x455x375MM(CB-21SA) / 490x455x425MM(CB-45SA)
- N.W/G.W(kg): 9.4/10.4 (CB-21SA) / 15.5/17 (CB-45SA)
- Cold fast and low noise, with heat-pipe technology
- Intelligent thermostat
- Interior LED light with auto off
- No Freon, no compressor or moving parts



CB-30SA

SC-30SA

Model	CB-30SA	SC-30SA
Volume	30L	30L
Rated Power	58W	58W
Voltage	220-240V~/110-120V~	220-240V~/110-120V~
Rated Frequency	50Hz/60Hz	50Hz/60Hz
Size (WxDxH)	385x420x475MM	385x420x485MM
N.W/G.W	10/11.1KG	11.4/12.4KG
Color	Black	Black



CB-20SA

SC-20SA

Model	CB-20SA	SC-20SA
Volume	20L	20L
Rated Power	58W	58W
Voltage	220-240V~/110-120V~	220-240V~/110-120V~
Rated Frequency	50Hz/60Hz	50Hz/60Hz
Size (WxDxH)	360x390x440MM	360x385x440MM
N.W/G.W	8.5/9.3KG	10/11KG
Color	Black	Black



CB-40SA

SC-40SA

Model	CB-40SA	SC-40SA
Volume	40L	40L
Rated Power	58W	58W
Voltage	220-240V~/110-120V~	220-240V~/110-120V~
Rated Frequency	50Hz/60Hz	50Hz/60Hz
Size (WxDxH)	400x425x560MM	400x420x570MM
N.W/G.W	11.8/13KG	14/15.2KG
Color	Black	Black



192, Nawala Road, Narahenpita, Colombo 05, Sri Lanka.

Tel : +94 112 808 315, +94 112 805 955 | Fax : +94 112 808 419

Mob : +94 777 789 276, +94 775 129 276

Email : serialinvestmentlanka@gmail.com